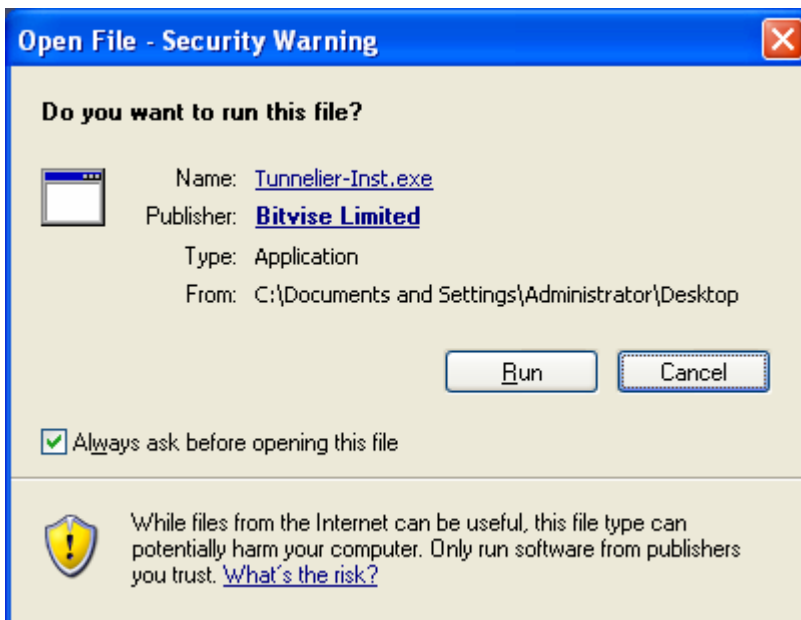


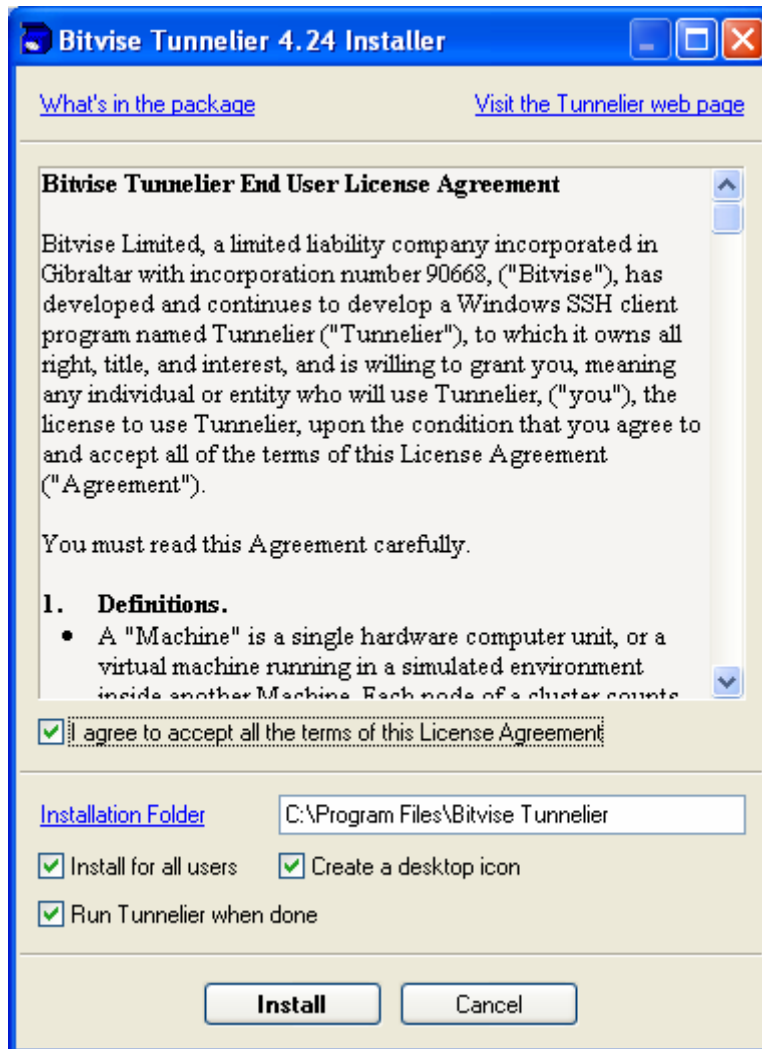
## Using Bitwise Tunnelier SSH client to Access Panther

### Installing Bitwise

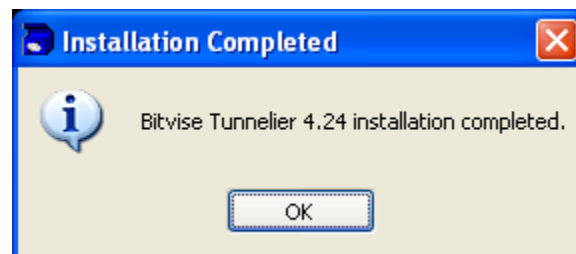
1. Download Bitwise from <http://www.bitwise.com/download-area>.
2. Double click .exe file you've downloaded.
3. Click "Run" on the Security Warning window.



4. Click the box next to "I agree to accept all the terms of this License Agreement" to confirm that you will comply with the end user license terms.
5. Click the "Install" button.

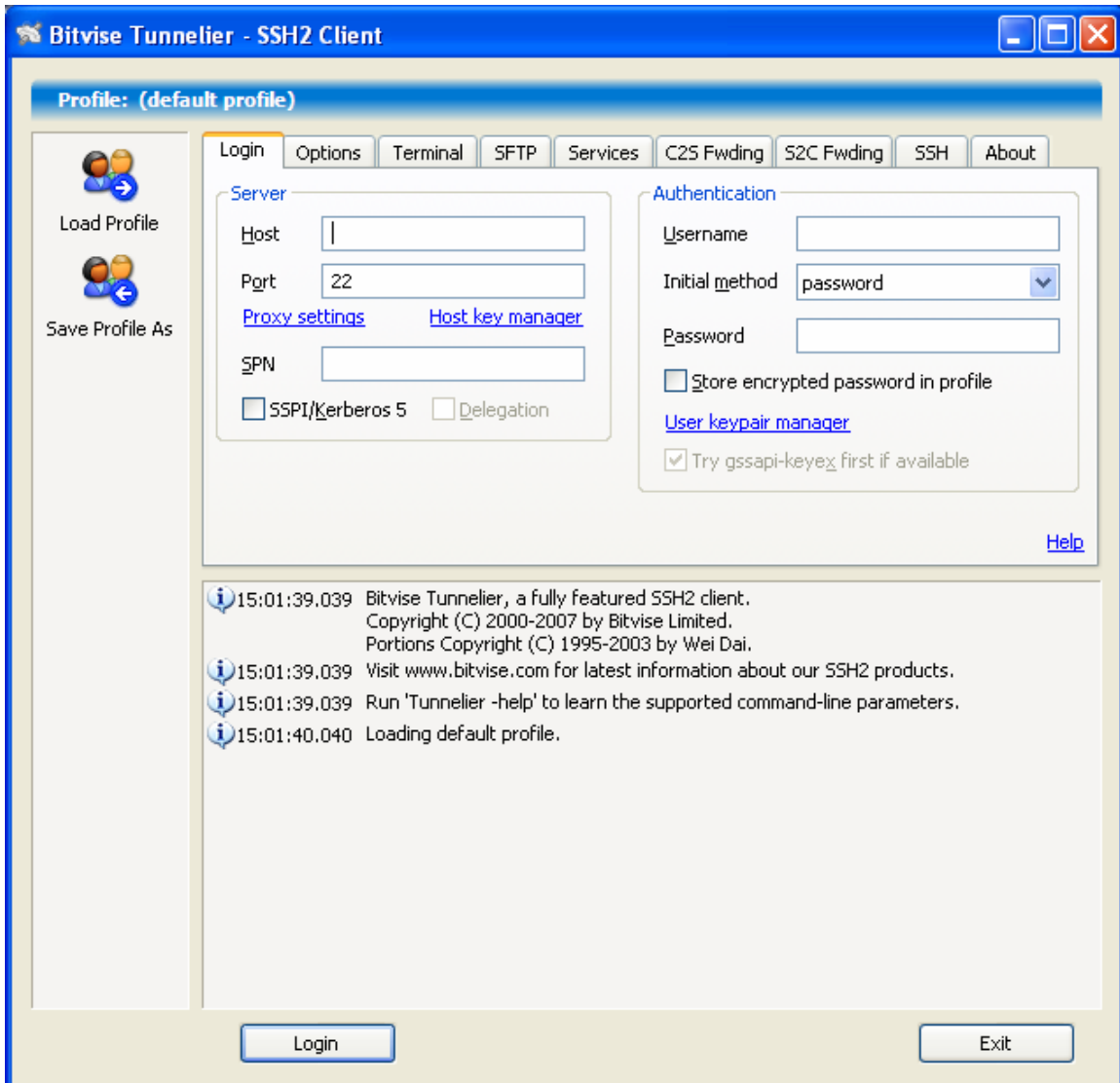


6. A notification will appear when the installation of the client is successful.

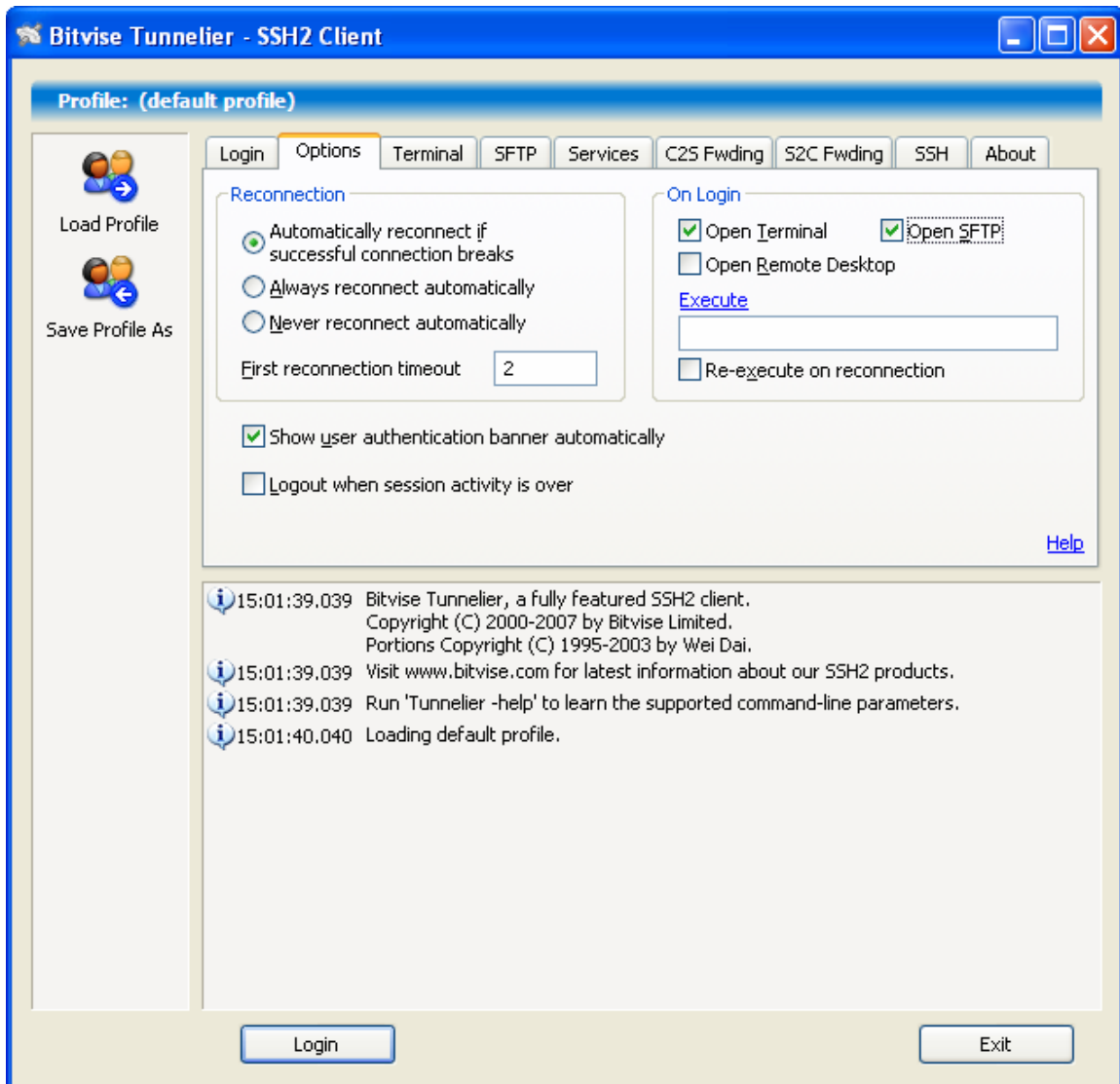


## Logging In to Panther with Bitvise:

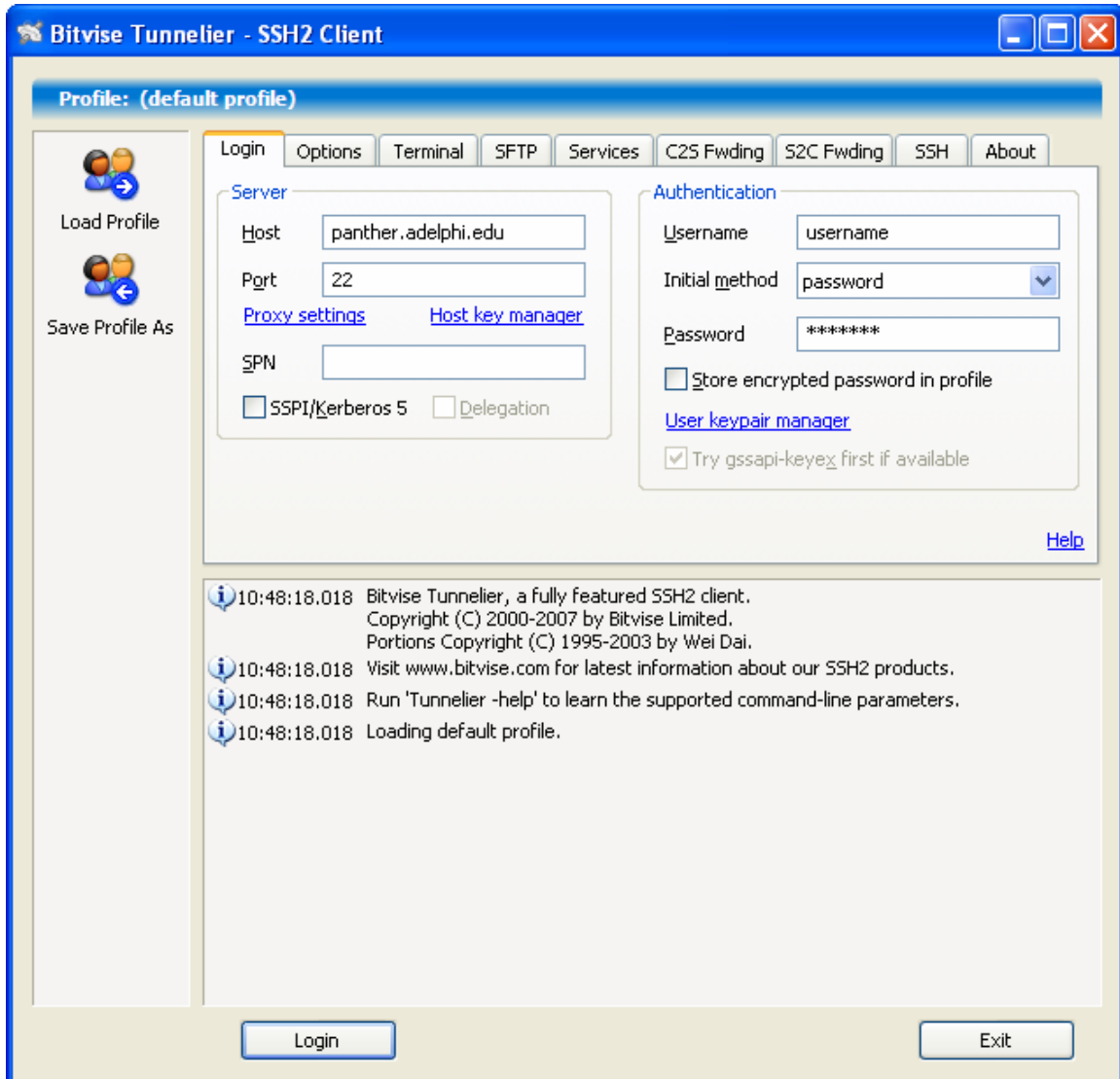
1. Open Bitvise Tunnelier client



2. Click the "Options" tab.
3. Make sure that the "Open SFTP" box is clicked on if you wish to use SFTP.



4. Back on the Login tab, enter "panther.adelphi.edu" into the Host field.
5. Enter you Adelphi eCampus universal username and password.
6. Click the "Login" button.

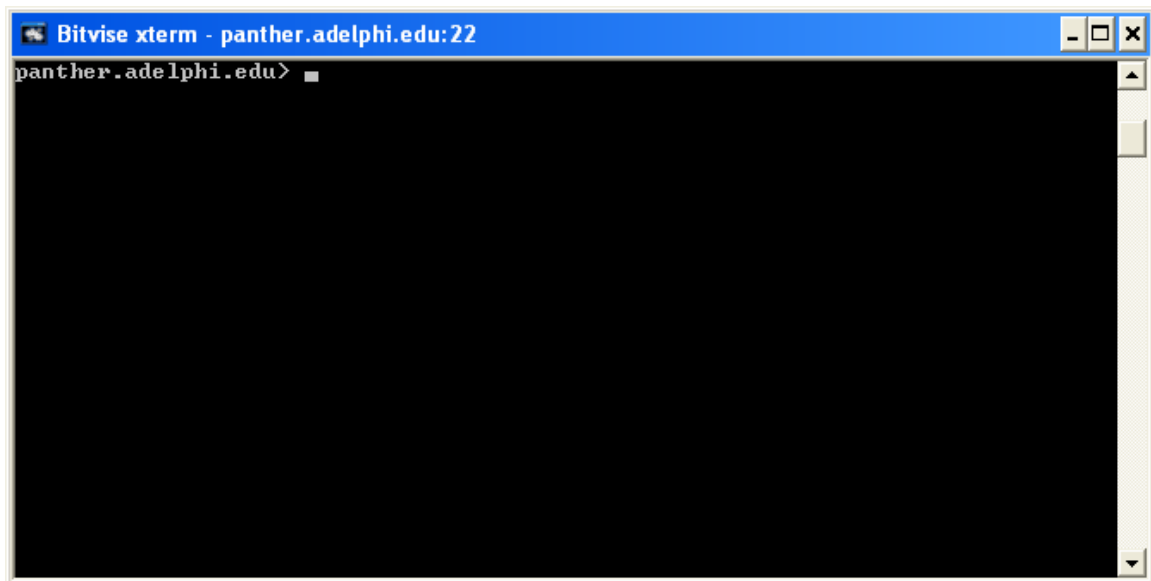


7. If you are logging in with SFTP, you will need to reenter your username and password.



The image shows a 'User Authentication' dialog box with a blue title bar and a close button. The text inside reads 'Connecting to: panther.adelphi.edu:22'. There are several input fields: 'Username' with the text 'username', 'Method' with a dropdown menu showing 'password', 'Password' (empty), 'New password' (empty), and 'Confirm password' (empty). There is also a checkbox labeled 'Change password' which is unchecked. At the bottom, there are 'OK' and 'Cancel' buttons.

8. The Command line shell will open.



9. If the SFTP box was checked in your Profile preferences, an SFTP window will appear.

