

Using PuTTY to Access Panther

Installing PuTTY

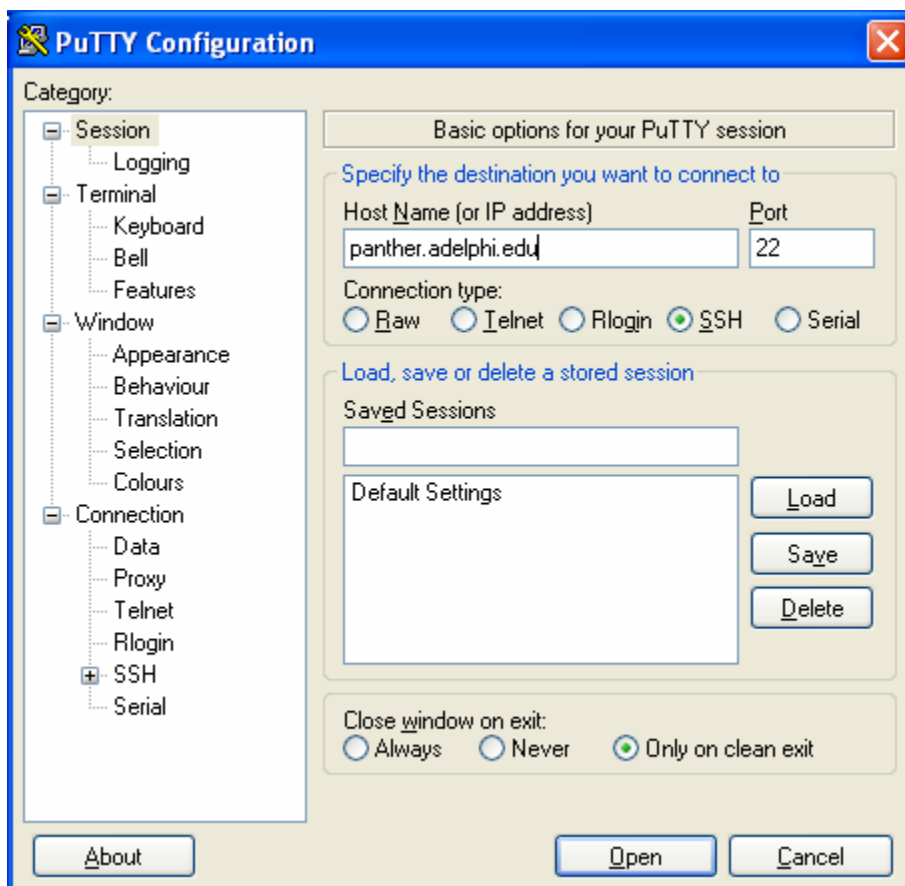
1. Download PuTTY from <http://www.chiark.greenend.org.uk/~sgtatham/putty/download.html>
2. Double click the putty.exe file you've downloaded.
3. Click "Run" at the Security Warning window.



4. The PuTTY configuration interface will open.

Configuration and Panther Login

1. Enter "panther.adelphi.edu" into the Host Name box
2. The Port should be set to 22.
3. Make sure the SSH option is selected under Connection type
4. Hit the "Open" button



5. The Panther login window will appear.
6. Enter your Adelphi eCampus universal username and password.



7. You will then enter the command line interface for Panther.

