

Using FileZilla to Access Panther

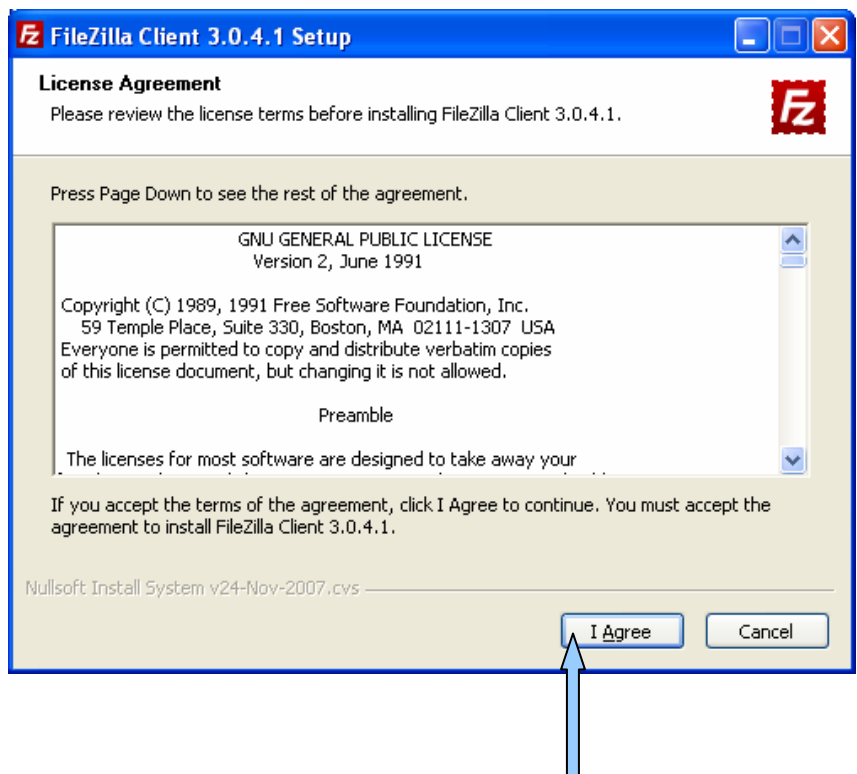
FileZilla Client is a reliable cross-platform SFTP client with useful features and an intuitive interface. You can use this free resource to securely transfer files. FileZilla is open source software distributed under the terms of the GNU General Public License

Installing FileZilla

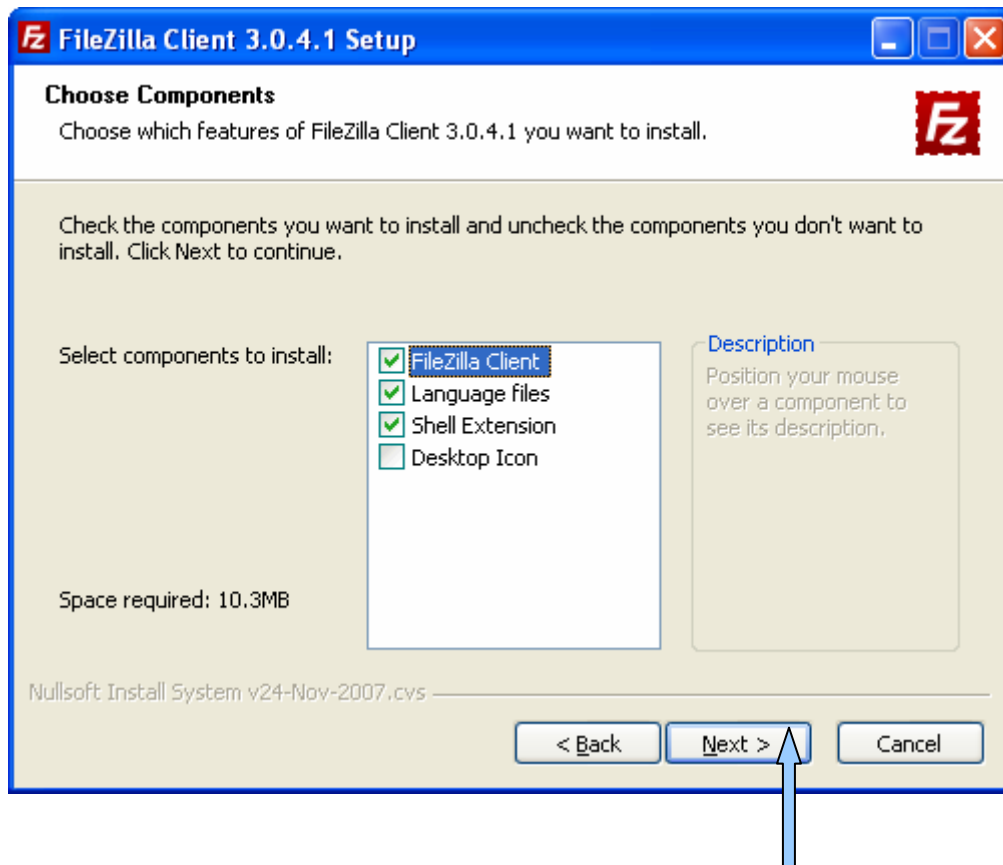
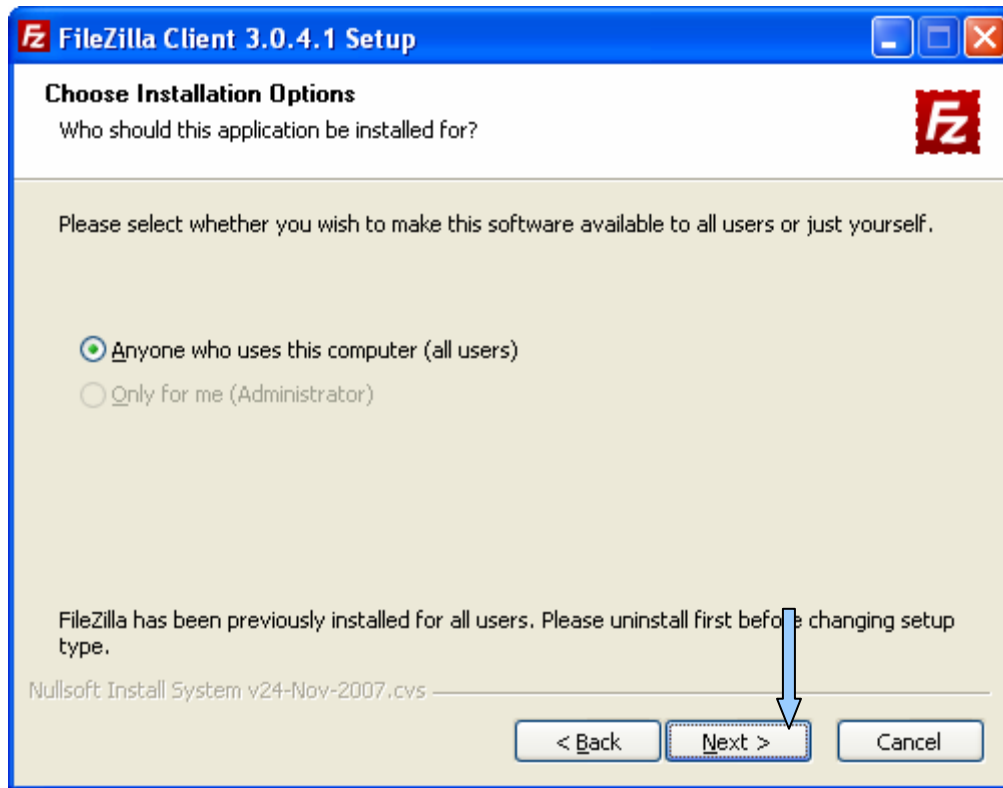
1. Download FileZilla from <http://filezilla-project.org/download.php>.
2. Double click the .exe file you've downloaded.
3. Click **Run** at the Security Warning window.

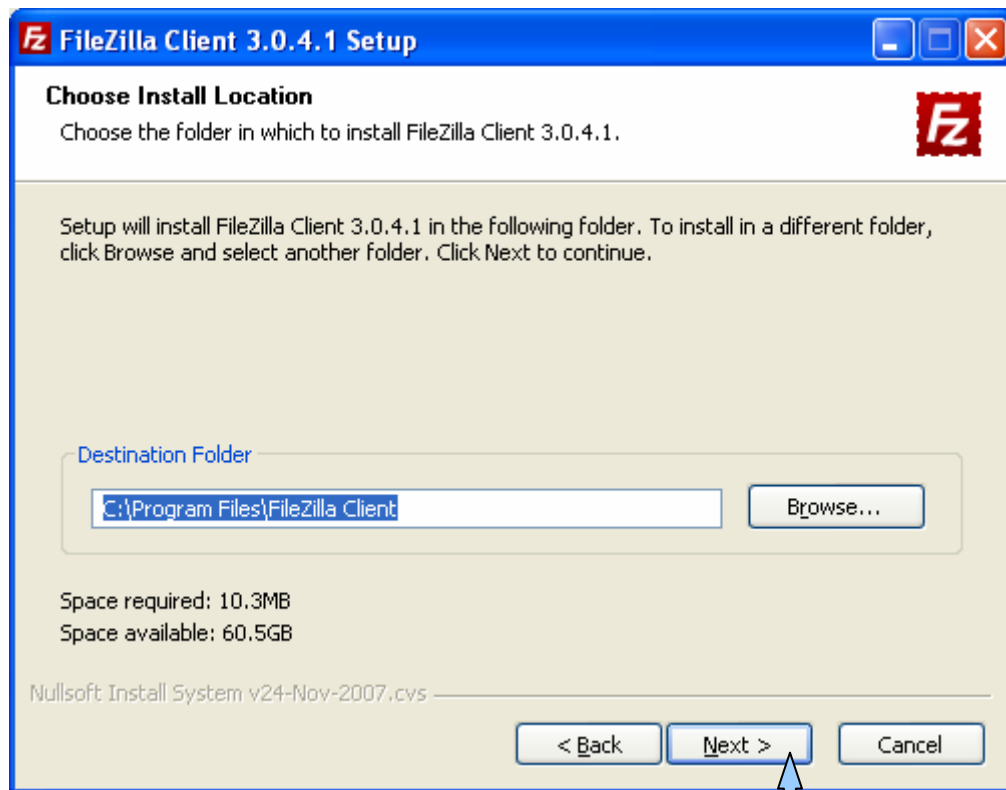


4. Click **I Agree** at the bottom of the setup window.

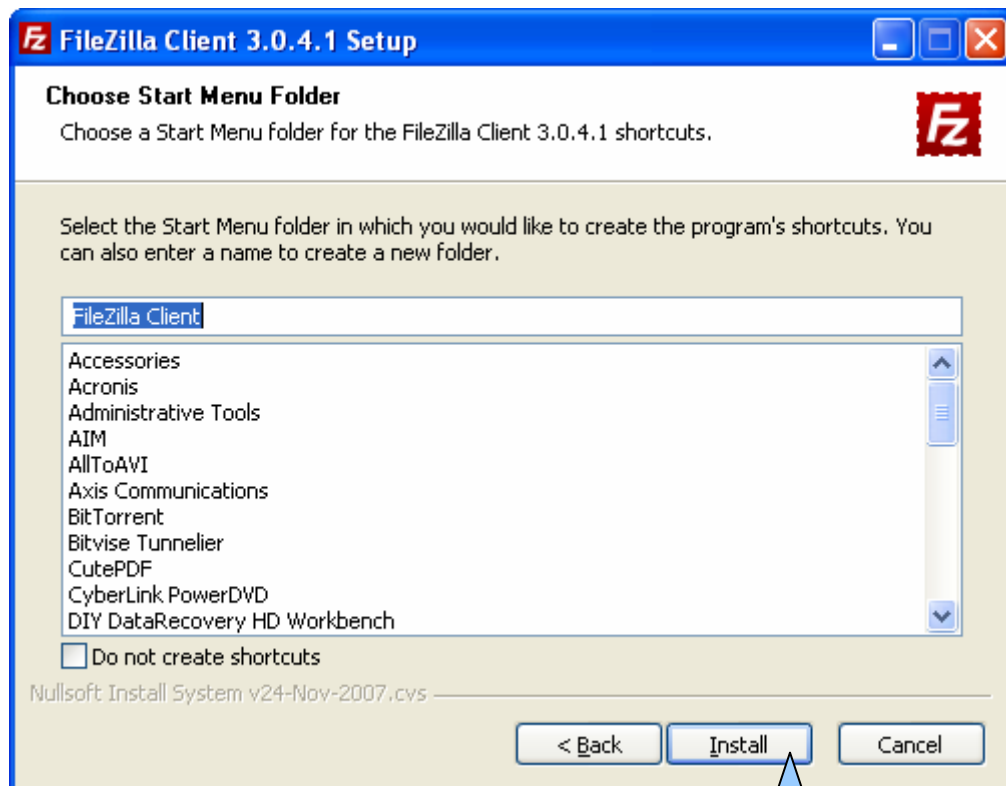


5. Click **Next** on all of the following setup windows.

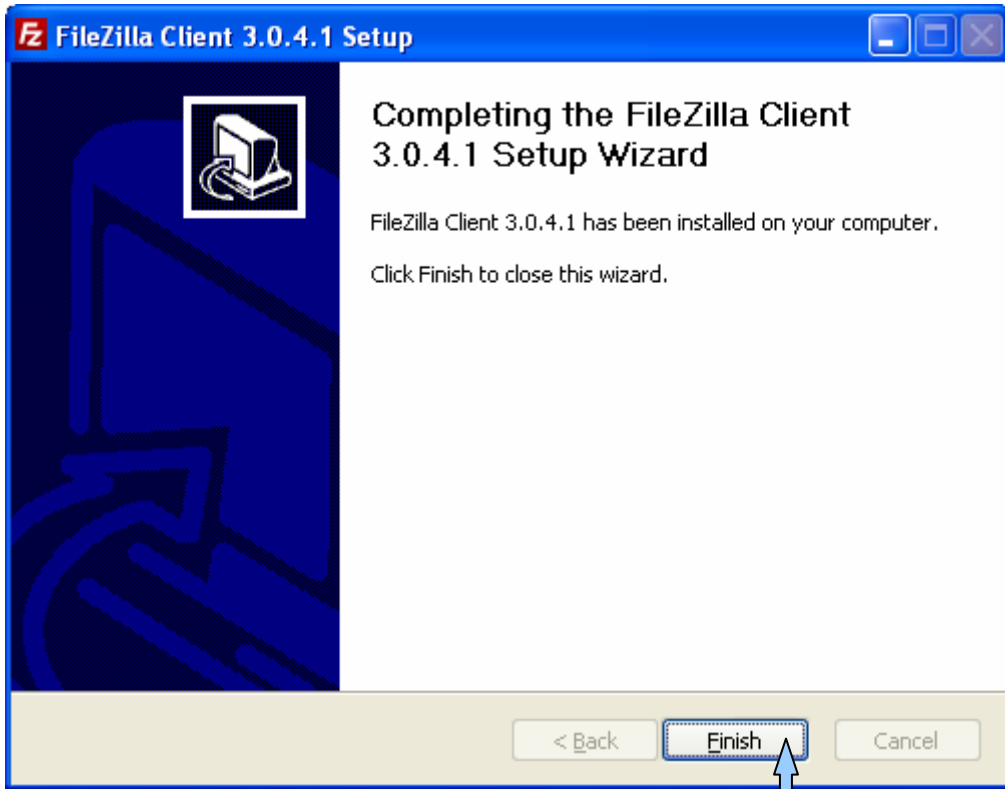




6. Click **Install** on the following window.

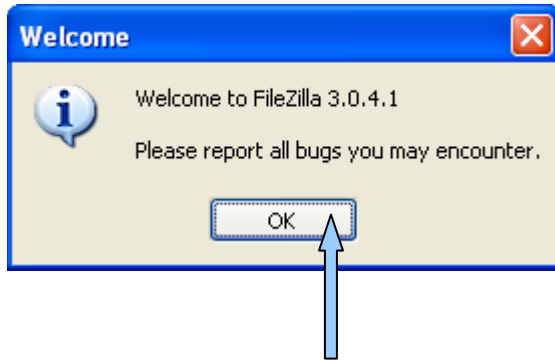


7. Installation will run. When it is completed, click the **Finish** button that appears on the screen as shown below.

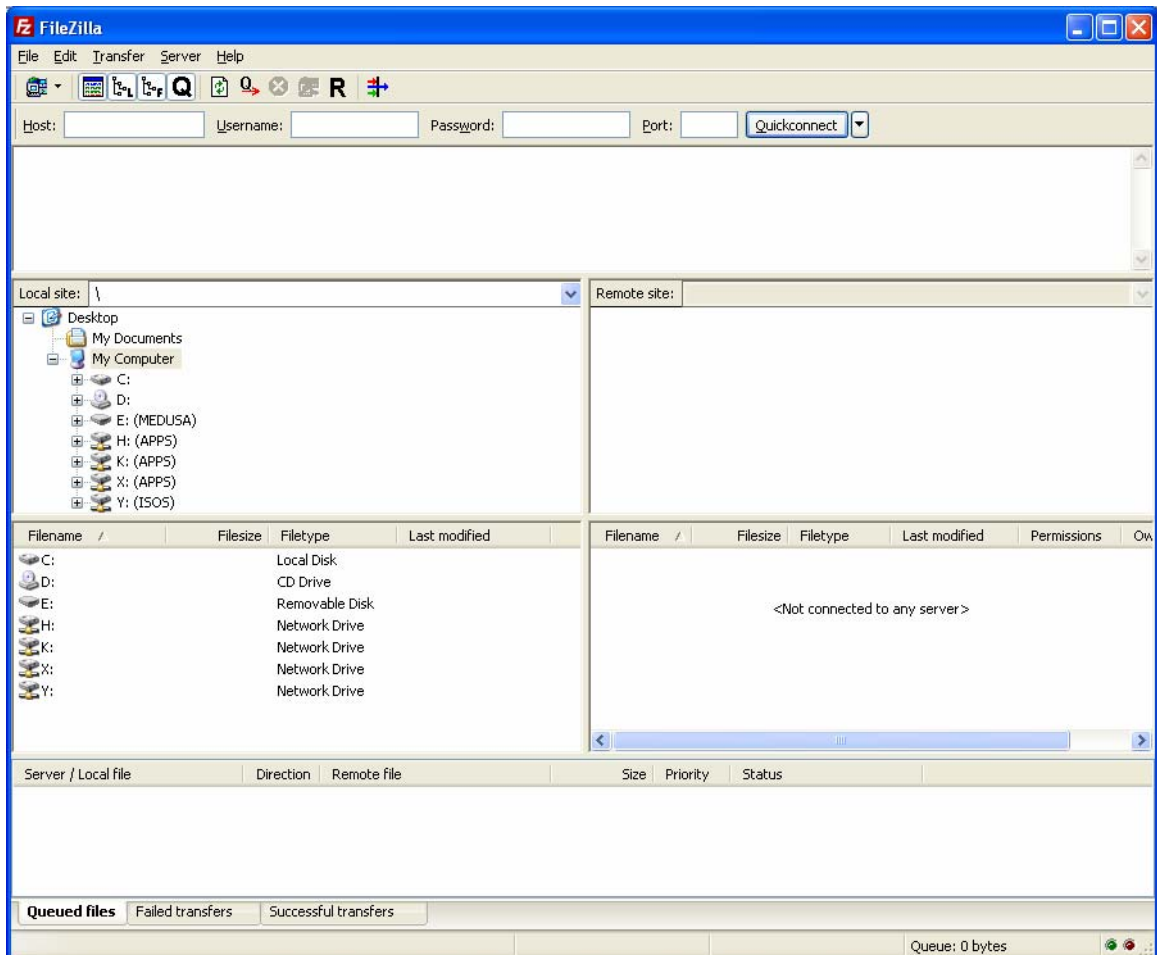


Logging in to Panther with FileZilla

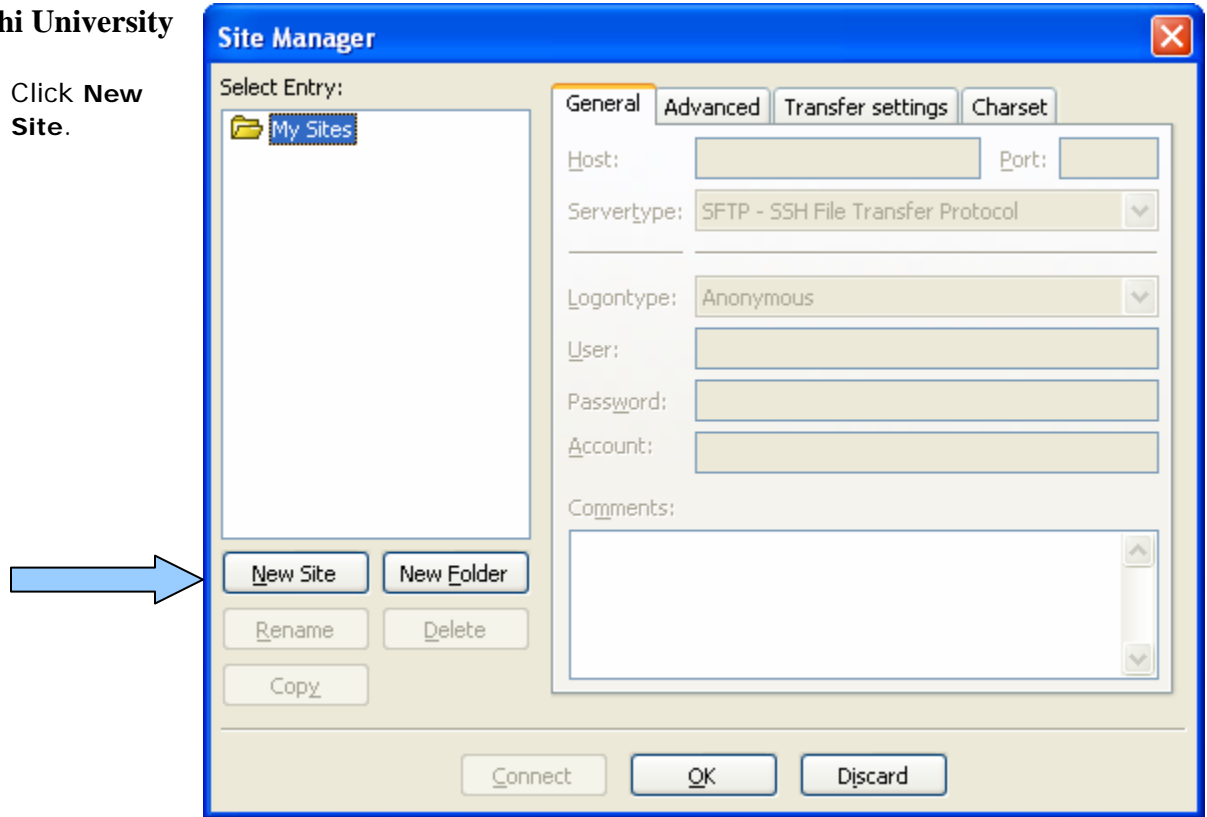
1. Open FileZilla Client.
2. Click **OK** at the Welcome window.



3. The client window will appear.
4. Go to **File** in the Toolbar and select **Site manager**.



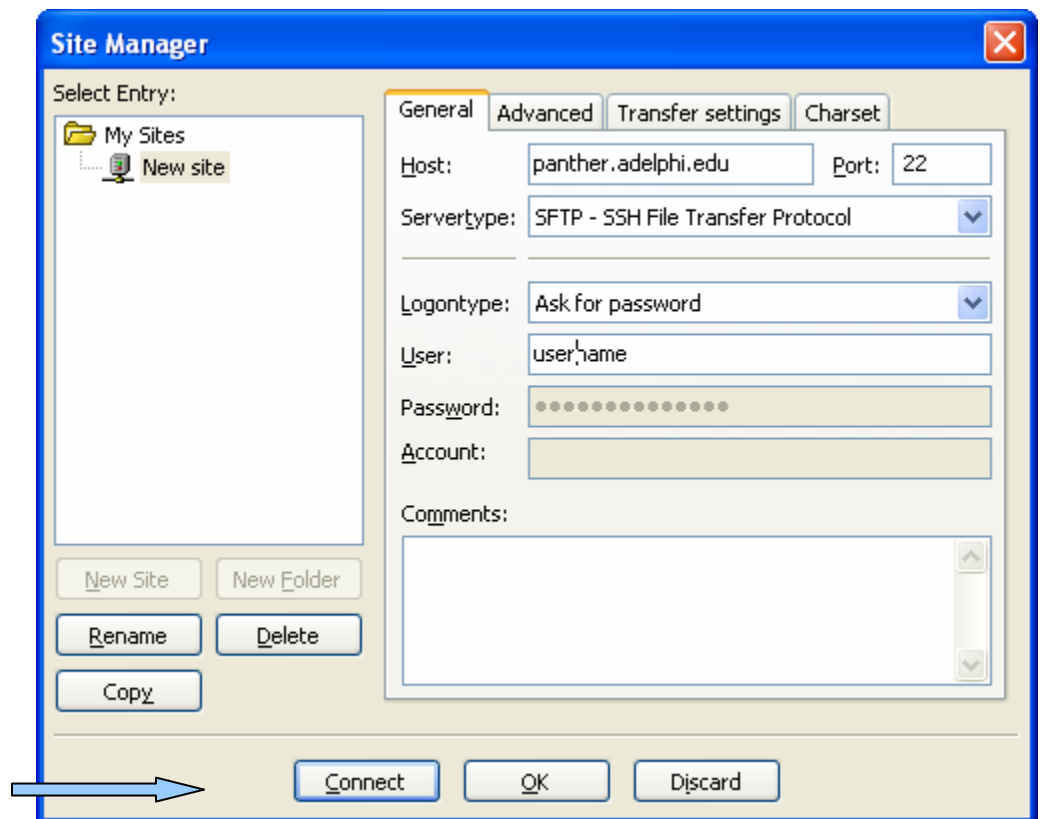
5. Click **New Site**.



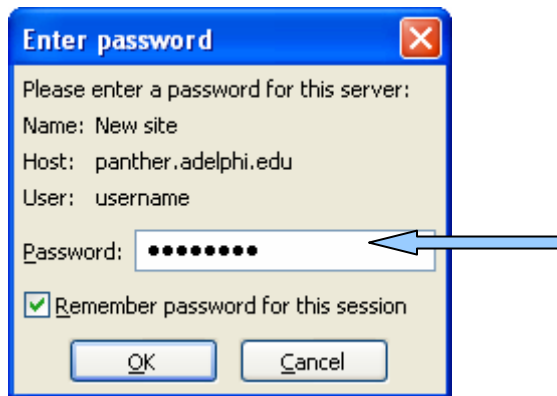
6. Enter or select the necessary information within the respective fields:

Host: panther.adelphi.edu **Port:** 22
Srvertype: SFTP - SSH File Transfer Protocol
Logontype: Ask for password
User: Your Adelphi eCampus universal username.

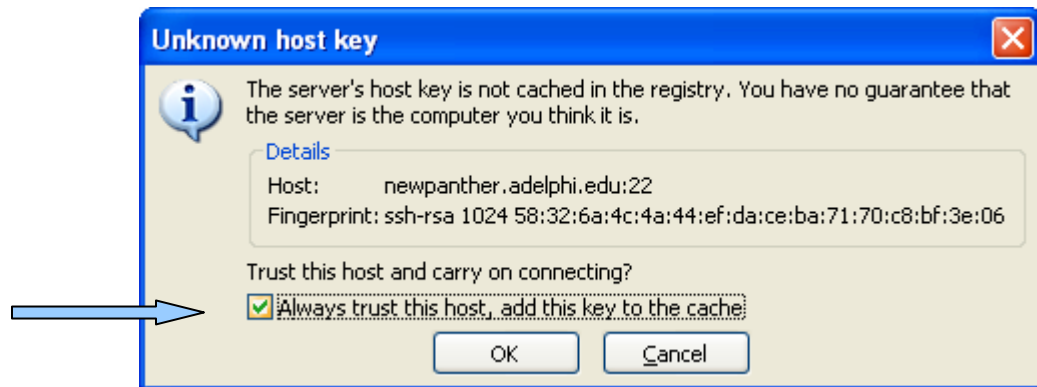
7. Hit the **Connect** button.



8. Enter your eCampus password.



9. Check off the box next to "Always trust this host, add this key to the cache" and click the **OK** button.



10. Correct login will result in access to your directory.

11. For future logins:

- a. Launch FileZilla
- b. Go to **File** and select **Site manager**
- c. Select your profile. Make sure that **22** is selected for the Port
- d. Click **Connect**
- e. Enter your password.